

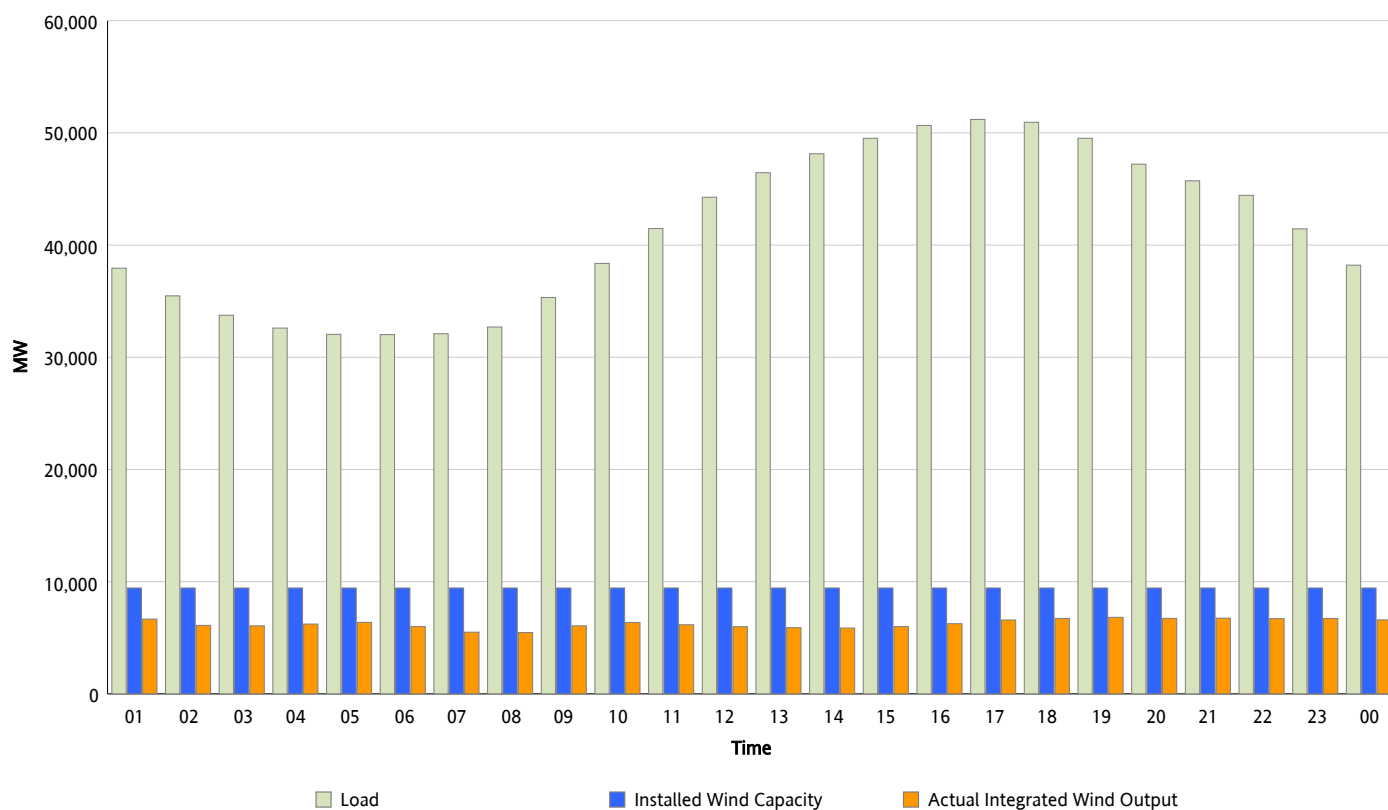


## ERCOT Grid Operations

### Wind Integration Report : 05/26/2012

Peak Load	51,202 MW
Load Peak Hour (HE)	17
Wind Over Peak	6,586 MW
Wind Record 04/13/12	7,925 MW
Max Wind Value*	7,102 MW
Wind Peak Time	00:00
Wind Integration %	18.05 %

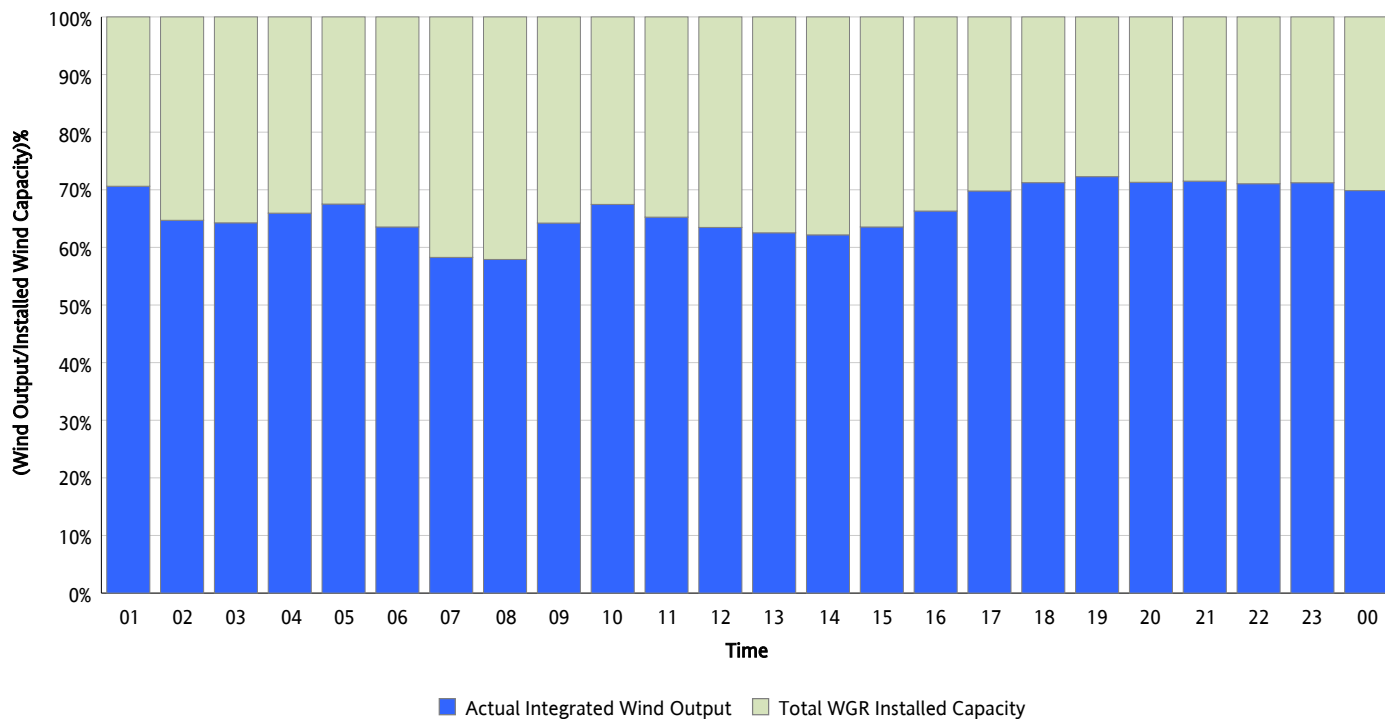
### Hourly Average Actual Load vs. Actual Wind Output 05/26/2012



\* Wind Record and Wind Max represent instantaneous values and the rest of the values are integrated over the hour

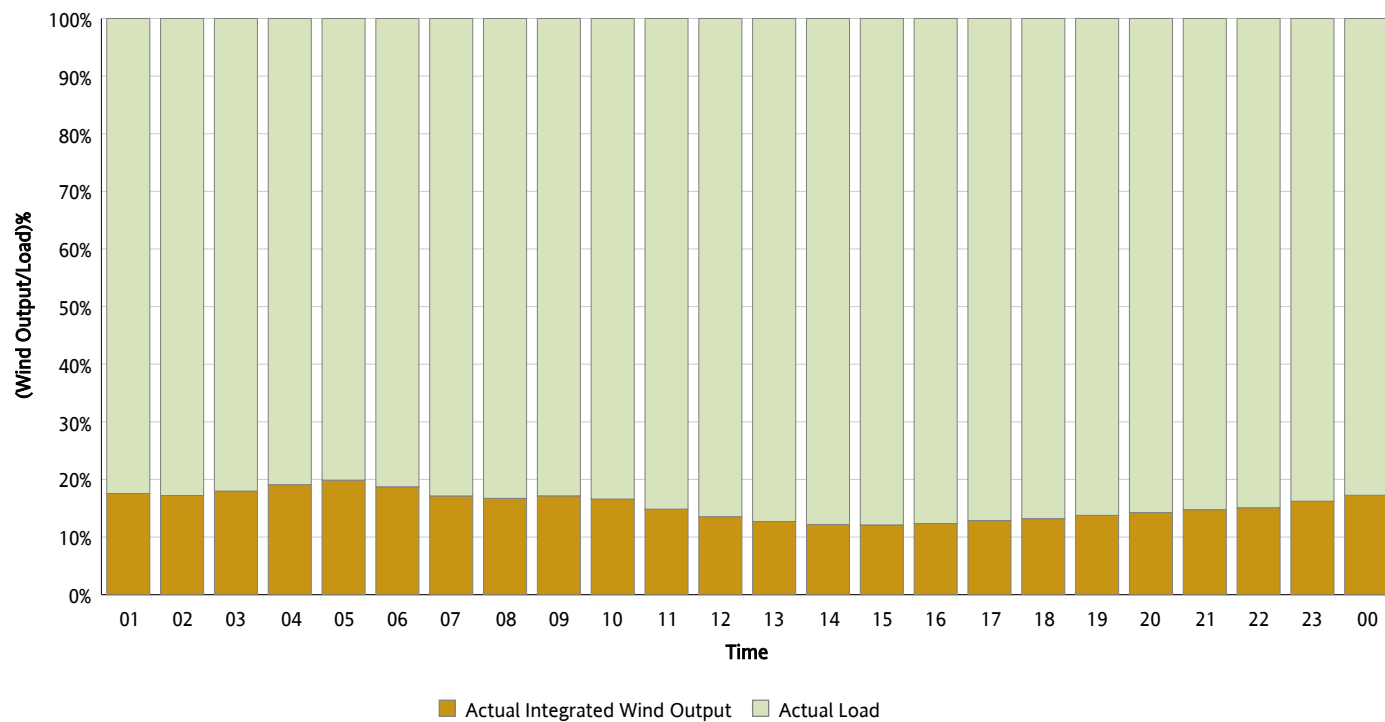
## Actual Wind Output as a Percentage of the Total Installed Wind Capacity

05/26/2012



## Actual Wind Output as a Percentage of the ERCOT Load

05/26/2012



## ERCOT Load vs. Actual Wind Output

05/19/2012 - 05/26/2012

